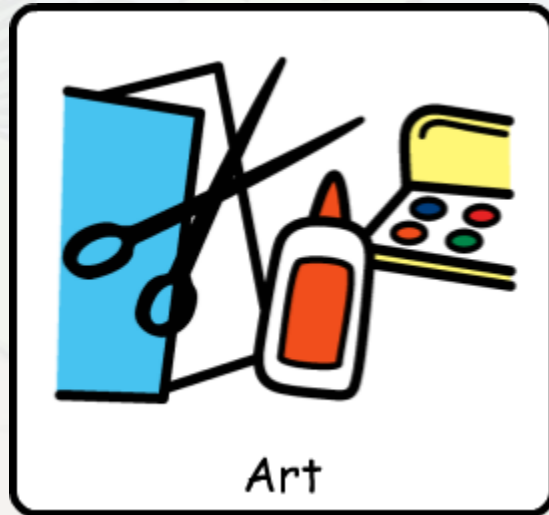
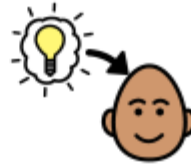


# Impressionism





What

we

are learning



L.O: To create a landscape painting.



We are also developing our:

**Problem Solving**



**Self Belief**



# Keywords

- Impressionism – a style or movement in painting that started in France in the 1860's.
- Landscape – everything that you can see when you look across an area of land, including hills, rivers, buildings, trees and plants.



# Claude Monet

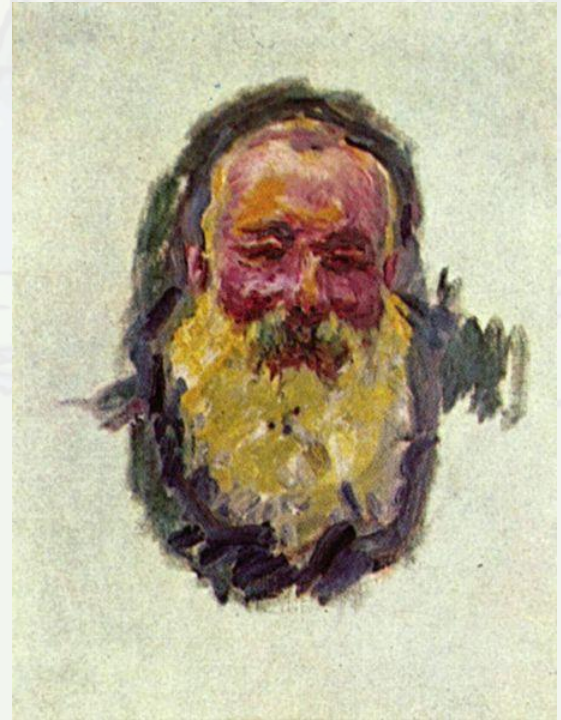
Oscar-Claude Monet was a French painter, born in 1840.

He was a founder of French Impressionist painting.

The term “Impressionism” comes from the title of his painting, *Impression, Sunrise*.

He enjoyed painting in the outdoors, and painted landscapes at different times of day and in all kinds of weather.

He often painted the same scene more than once, to capture the changing light and different seasons.



# Close-up



Monet painted with bold brushstrokes.

Up close, Monet paintings can look messy, and it can be hard to tell what it is.



**What do you think this could be a painting of?**

Attribution - Photo courtesy of CarlosR38 (@flickr.com) - granted under creative commons licence - attribution



# Close-up

Apple Trees in Bloom at Giverny 1900-01



Attribution - Photo courtesy of CarlosR38 (@flickr.com) - granted under creative commons licence - attribution

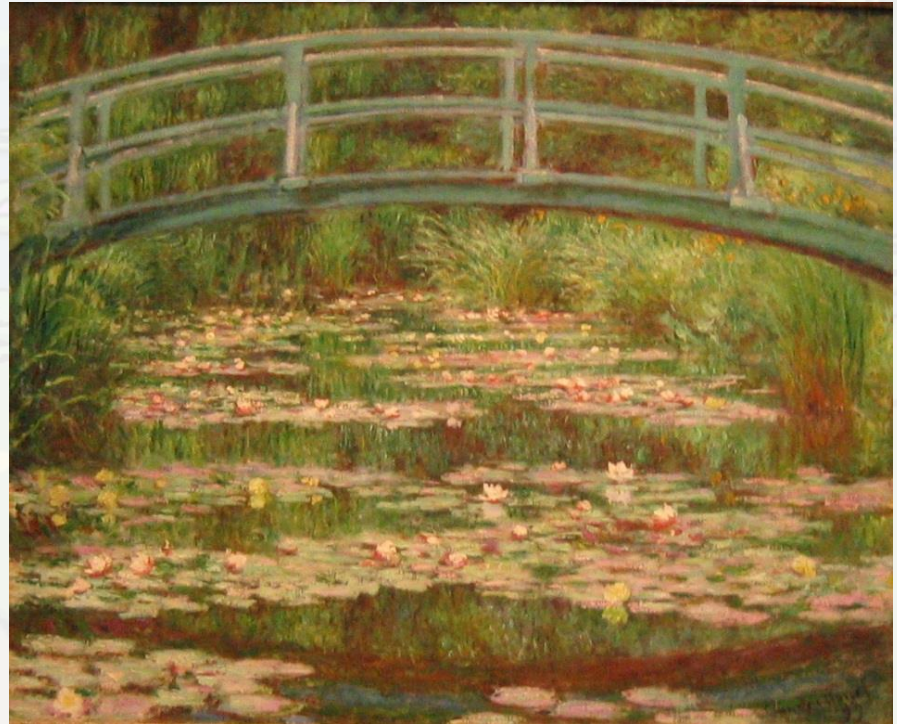


# Giverny

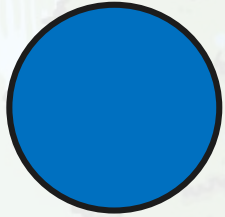
In 1883 Monet moved to Giverny, where he bought a house with lots of land.

He created beautiful gardens, starting with lily ponds.

He enjoyed painting his large garden in different seasons.

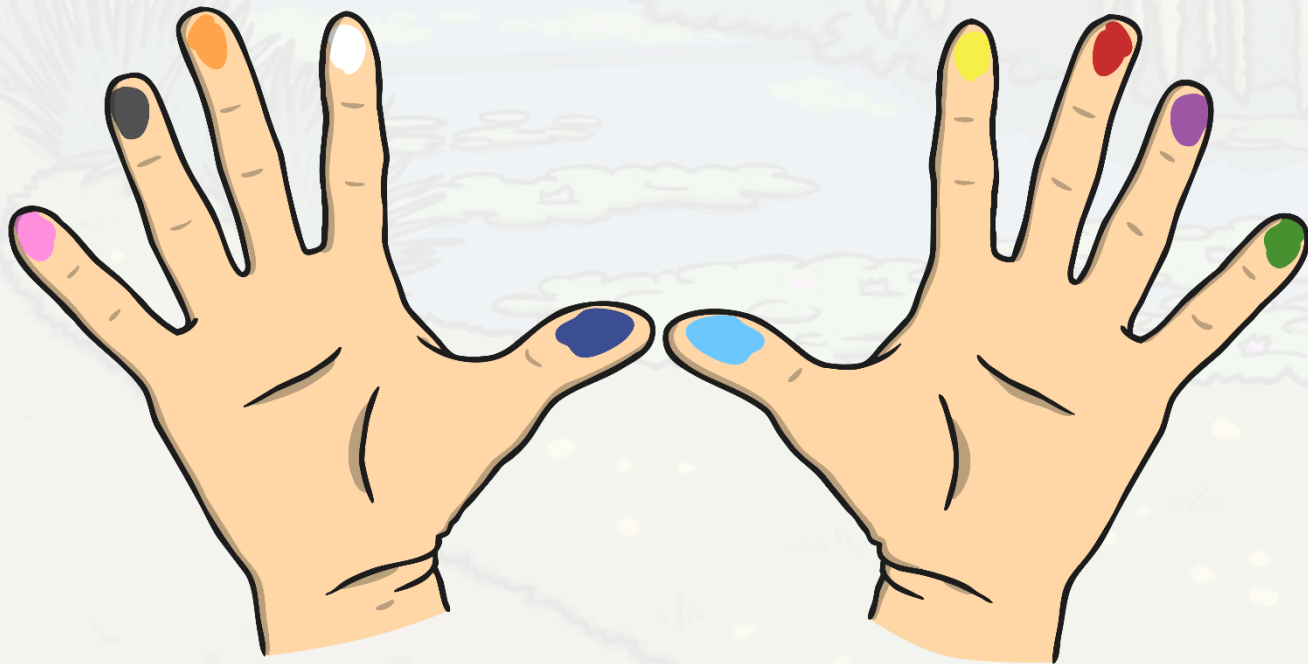


Attribution - Photo courtesy of Micah MacAllen (@flickr.com) - granted under creative commons licence - attribution

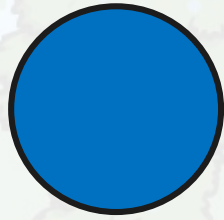


# Impressionist Finger Painting

We are going to paint like Monet. We are going to use our fingers!



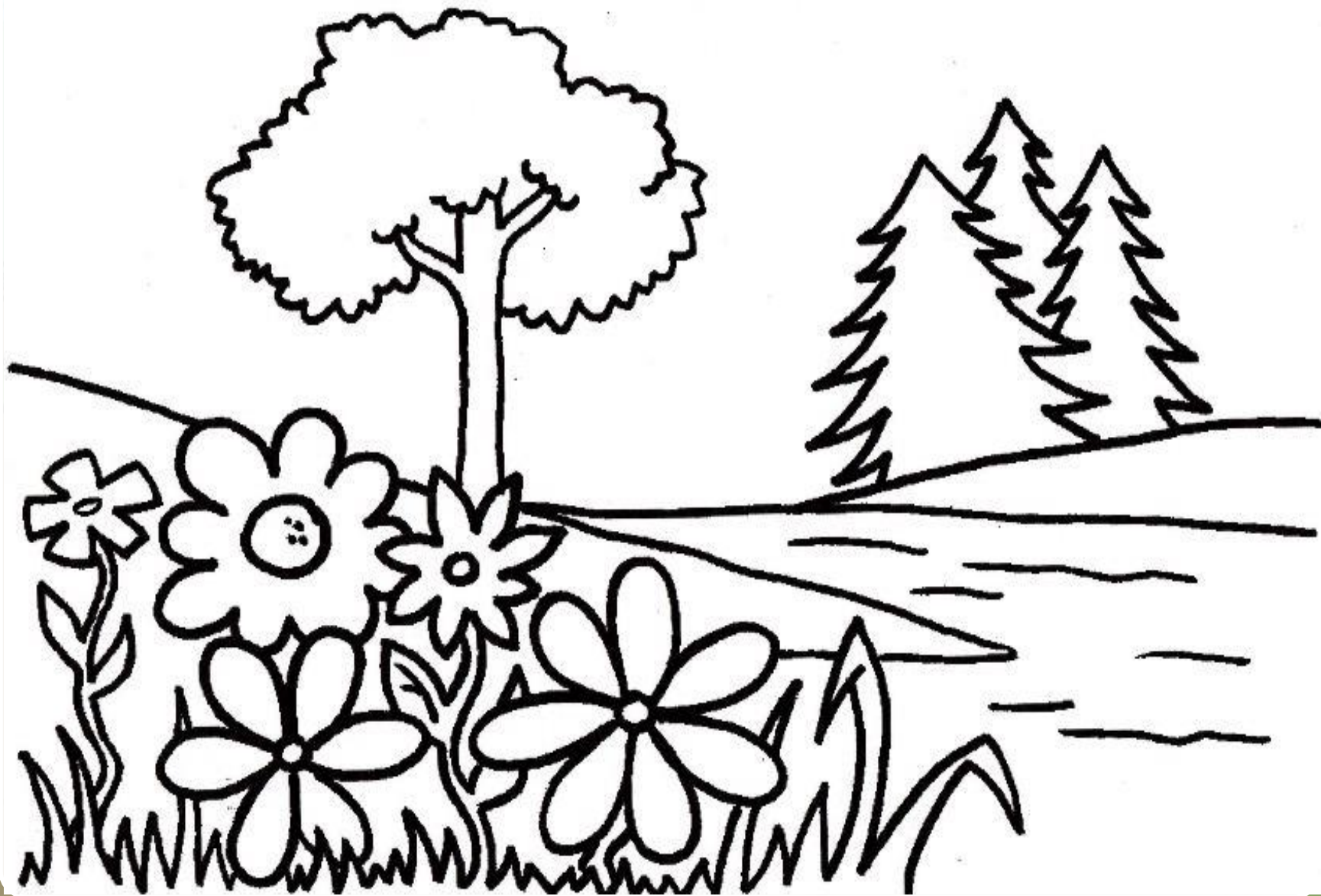




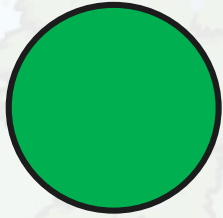
# Task



- Print out the picture on the next slide.  
If you don't have a printer you could ask an adult to help you sketch it out on a piece of paper.
- Paint like an Impressionist using your fingers to recreate small dots.
- Think about which colours you would use for a landscape.



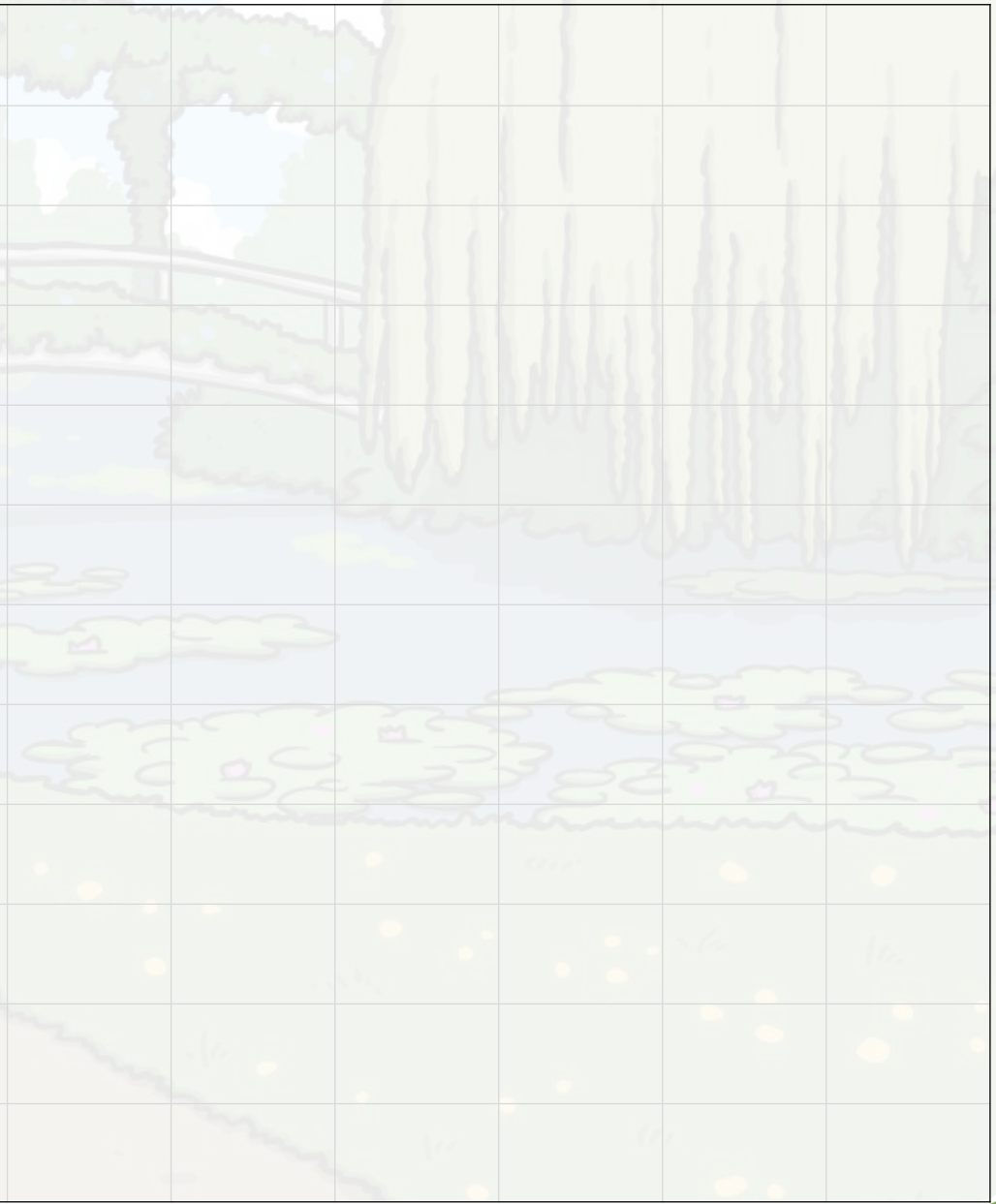
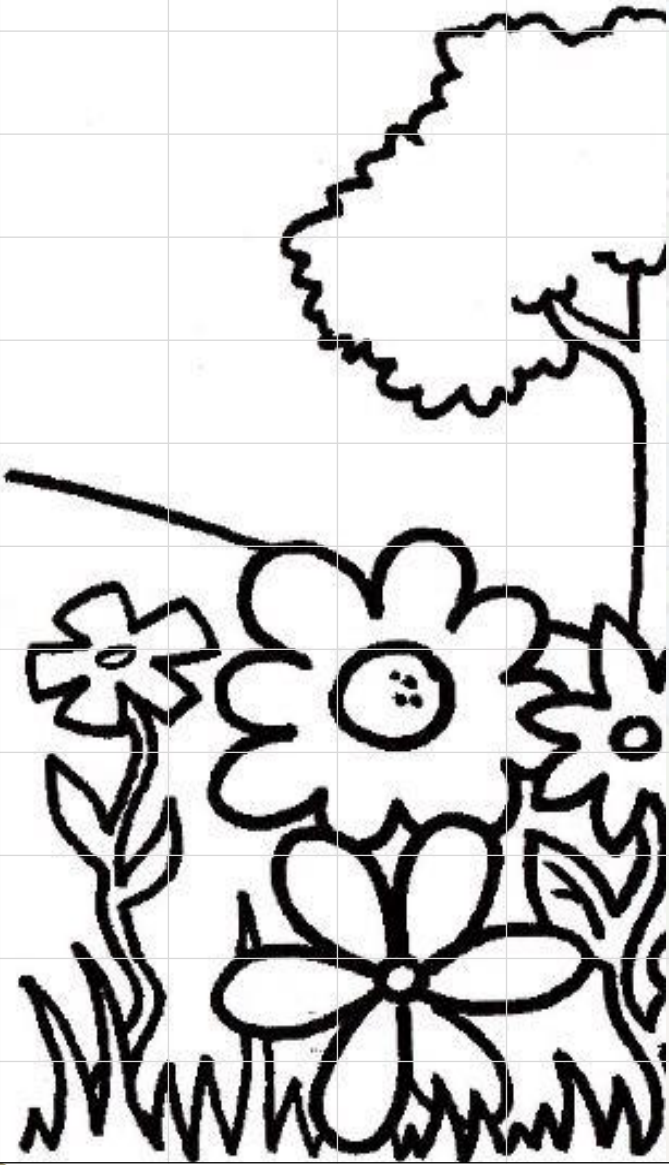




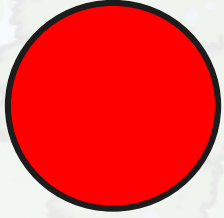
# Task

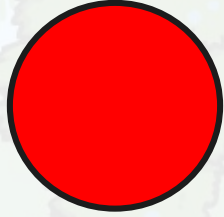


- Print out the picture on the next slide.  
If you don't have a printer try and sketch it out on a piece of paper.
- Sketch out the other half of the drawing.
- Once you have sketched out your landscape, paint or colour it in using small brushstrokes like Monet.









# Task



- Use your garden or front of your house as a landscape. You could also use one of the pictures from the previous slide.
  - Sketch this out on a piece of paper.
- Once you have sketched out your landscape, paint or colour it in using small brushstrokes like Monet.





