





Now is...

$$\frac{2}{3} \times \frac{3}{5} \qquad 3 \frac{1}{2}$$

maths

# Learning Objectives:

To identify o'clock times

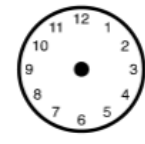
To identify half past times

To identify quarter to and quarter past times

# Key Words:

  
clock


  
time

  
minute

  
hour

  
o'clock

  
half past

  
quarter to

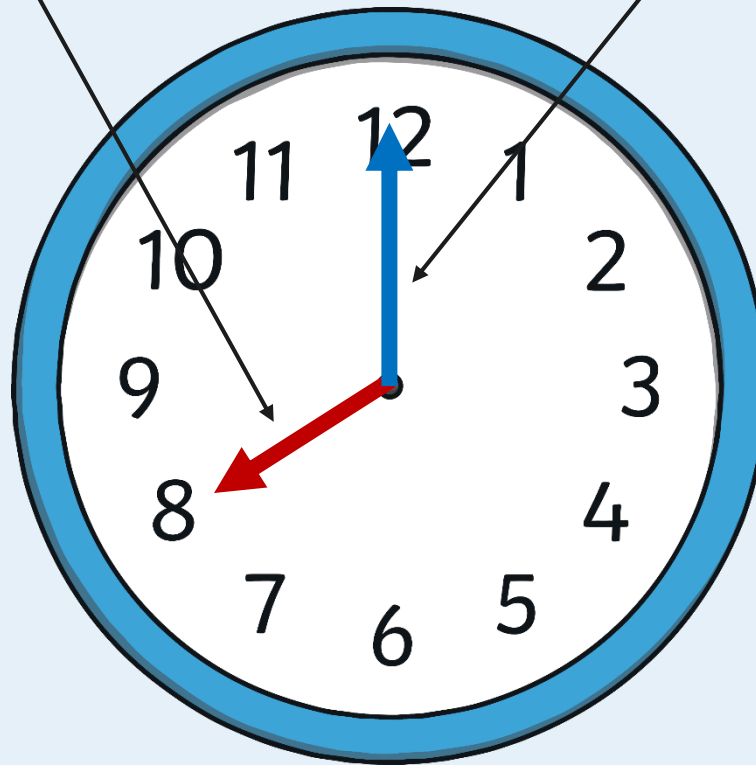
  
quarter past

## Blue activity:

# Key parts of a clock

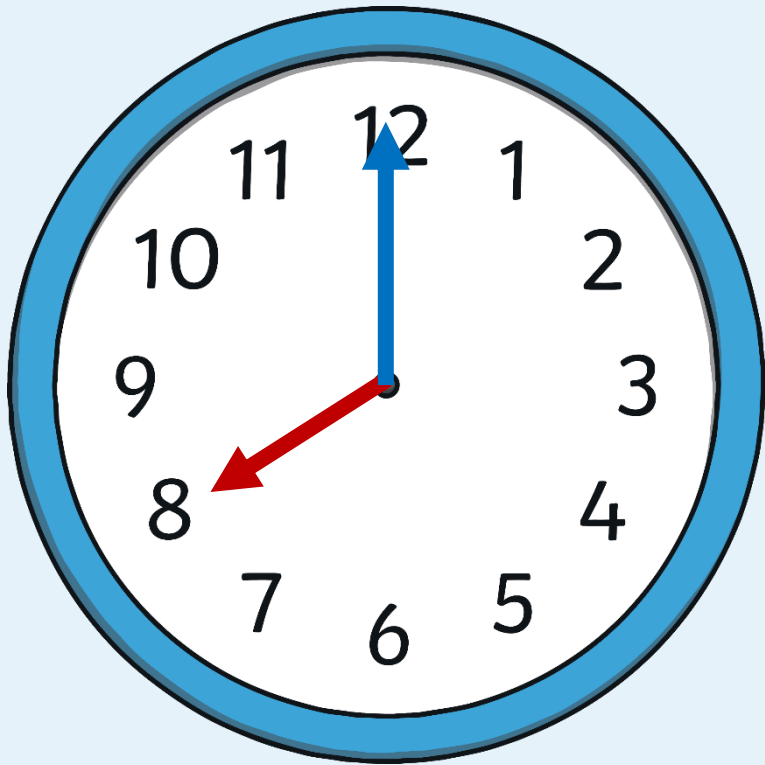
This is the **hour** hand.

This is the **minute** hand.



# O'clock times

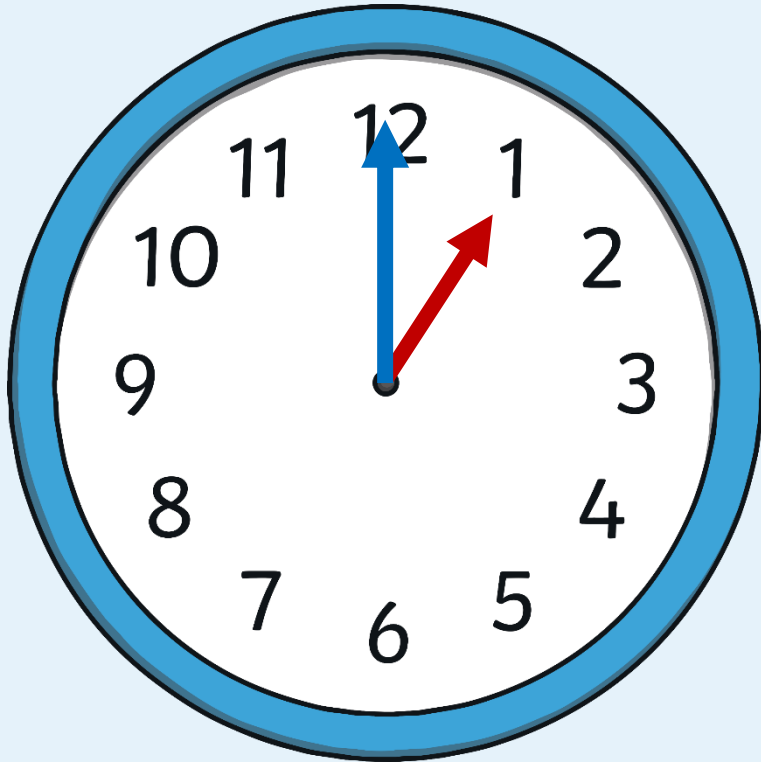
When the minute hand is pointing to 12, it is showing a full hour.  
We call this time o'clock.



What time is this?

8 o'clock

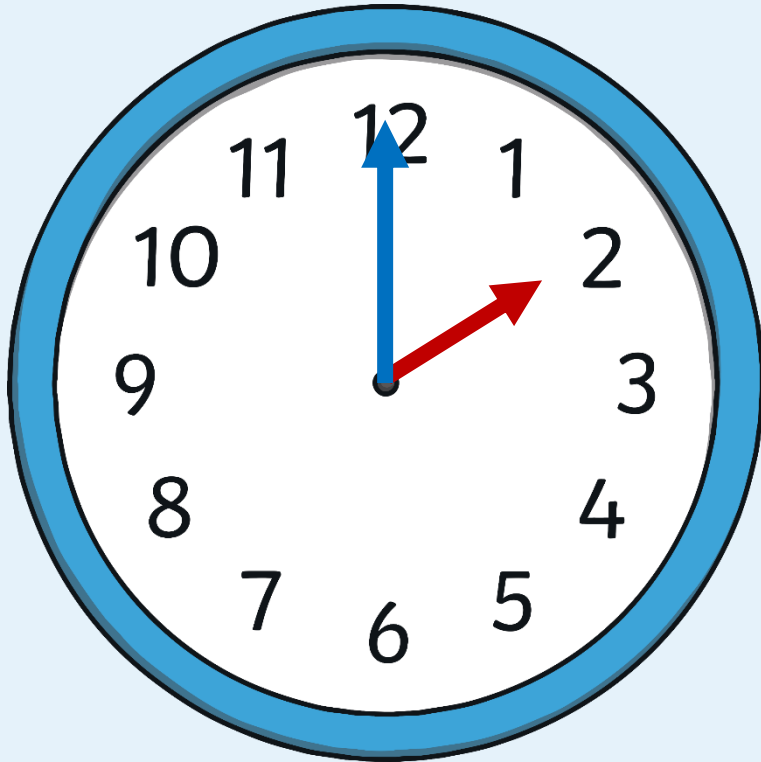
# What time is it?



What time is this?

1 o'clock

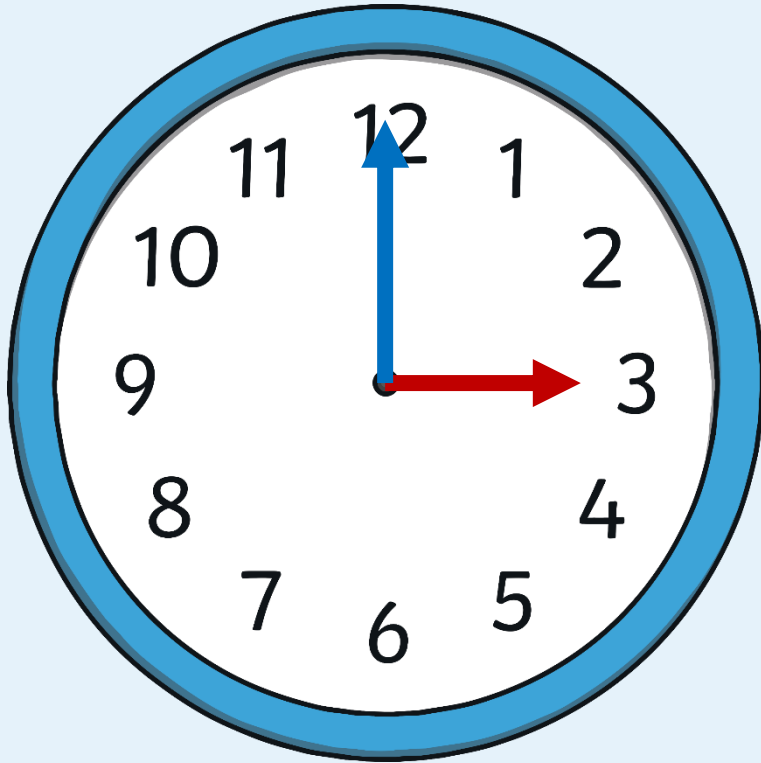
# What time is it?



What time is this?

2 o'clock

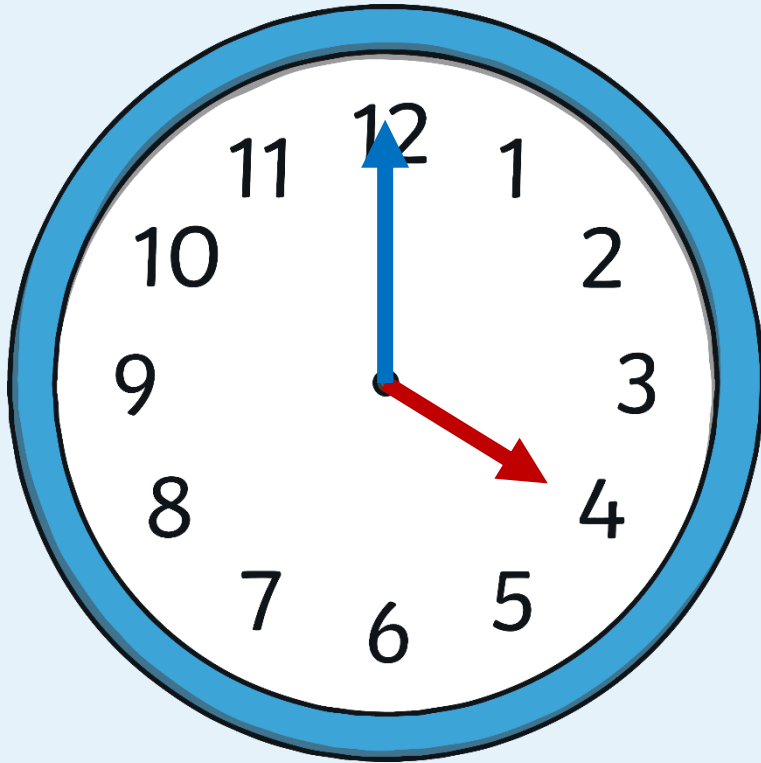
# What time is it?



What time is this?

3 o'clock

# What time is it?

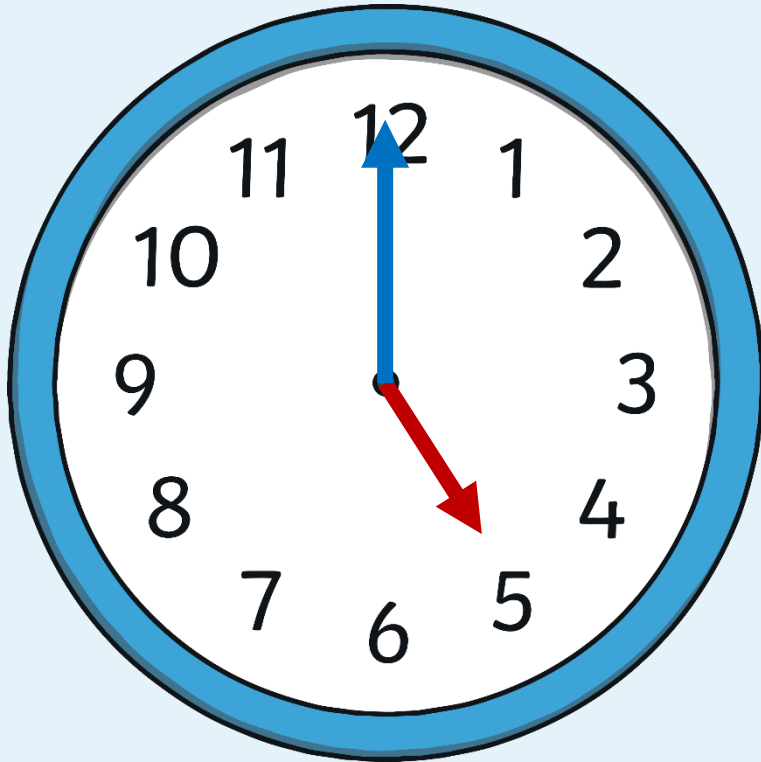


What time is this?

4 o'clock



# What time is it?

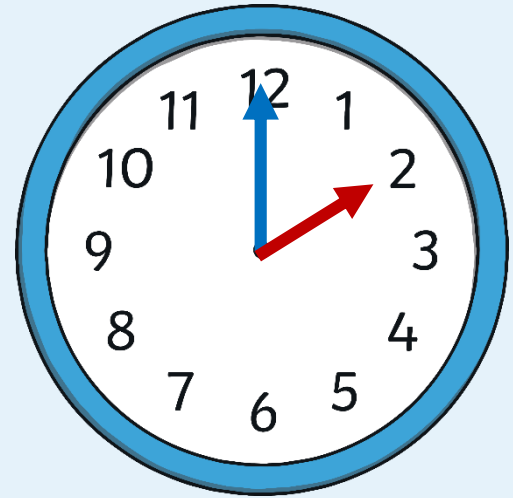
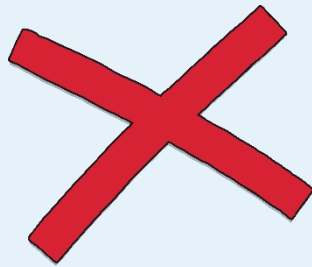
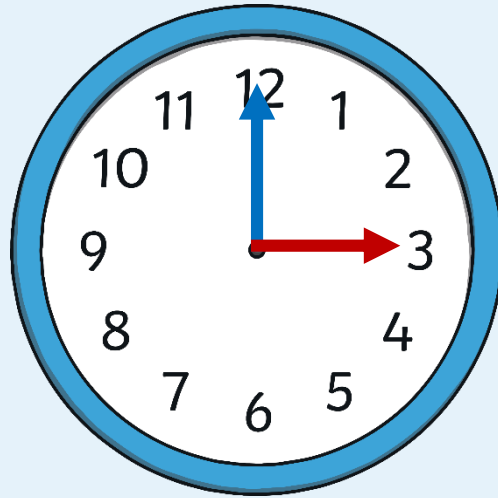
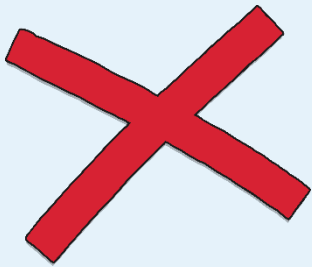
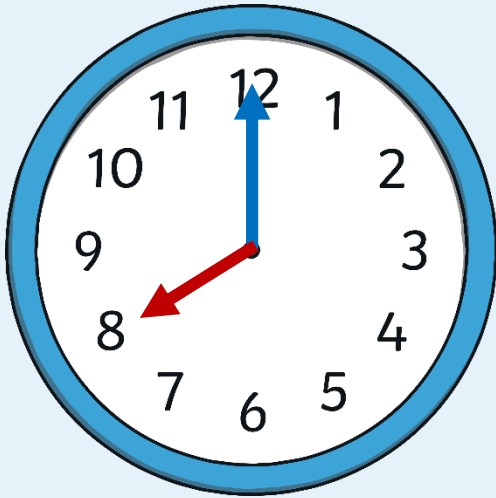


What time is this?

5 o'clock

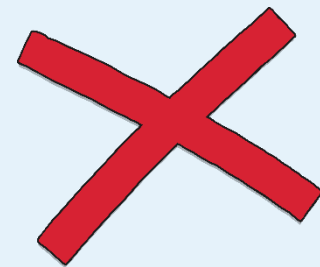
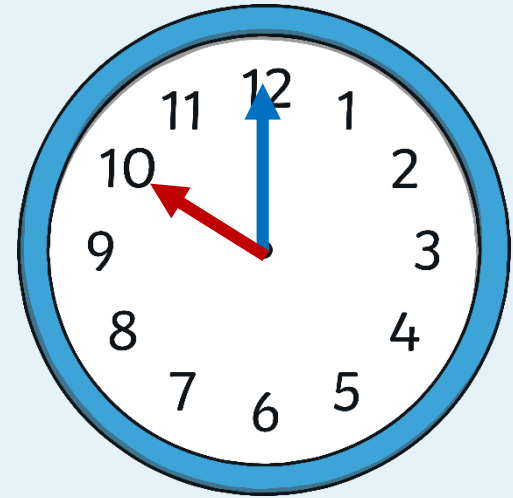
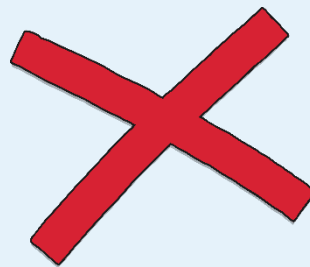
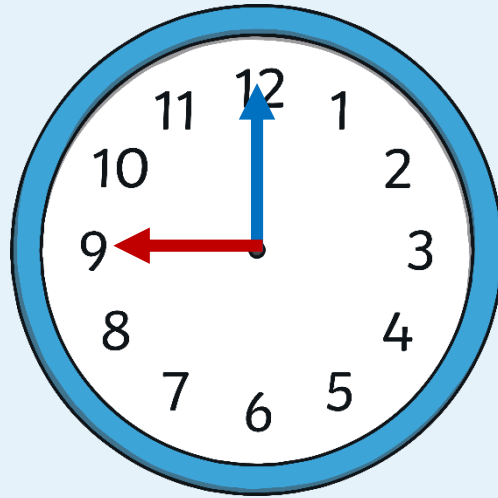
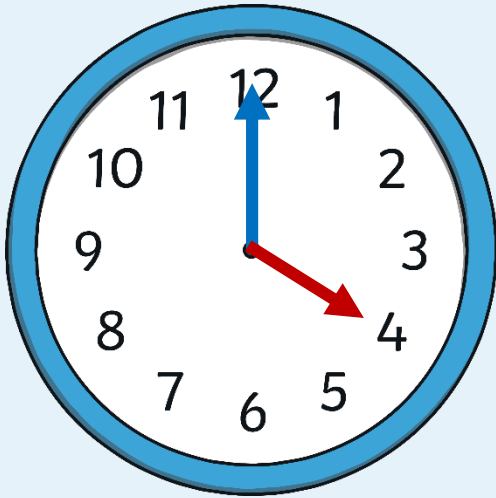
# What Time Is It?

Which clock shows 2 o'clock?



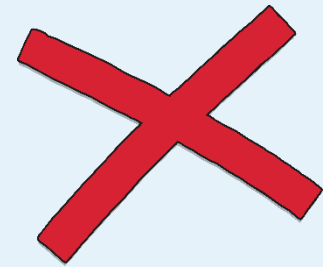
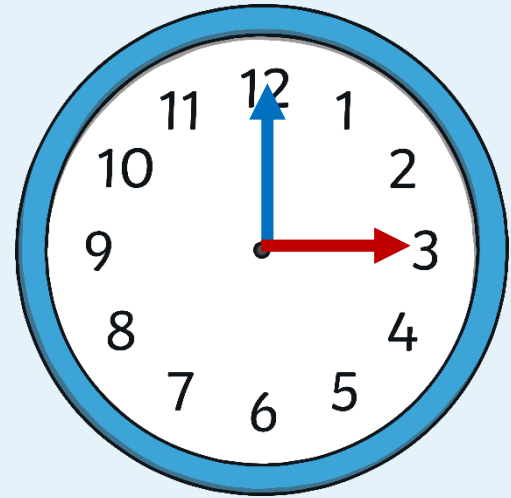
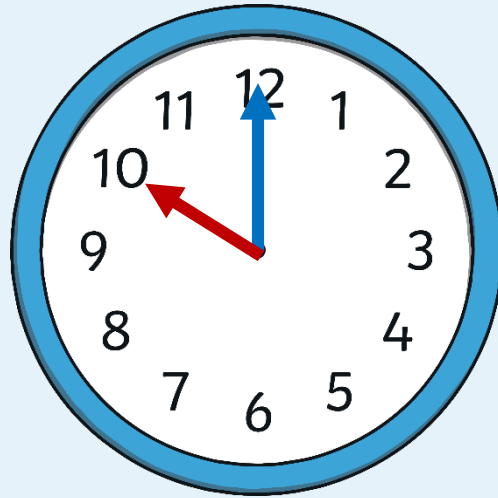
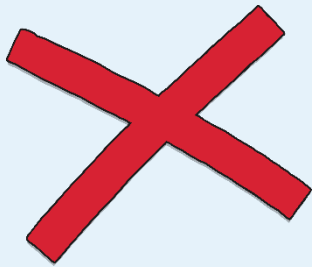
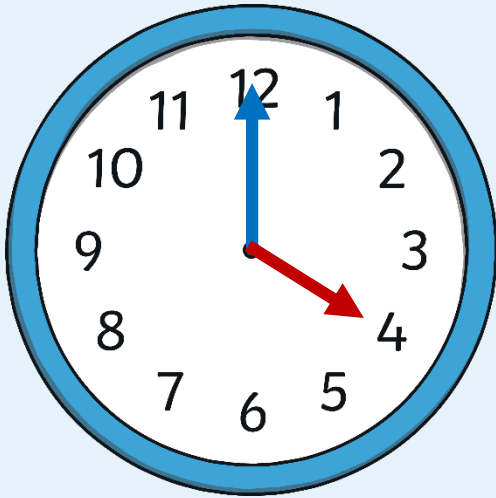
# What Time Is It?

Which clock shows 4 o'clock?



# What Time Is It?

Which clock shows 10 o'clock?

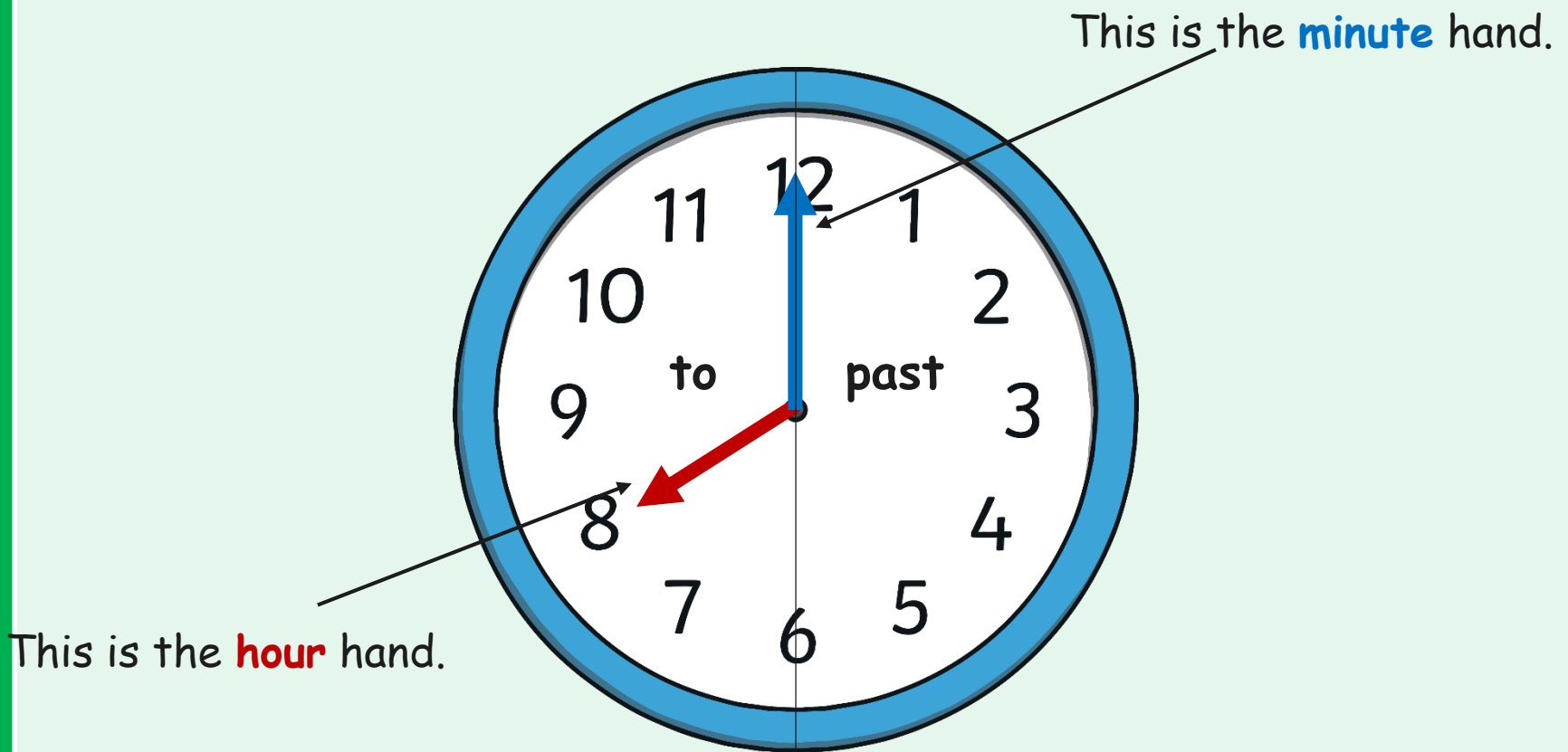


# Follow up activity:

Download the [BLUE ACTIVITY](#) sheet on the school website

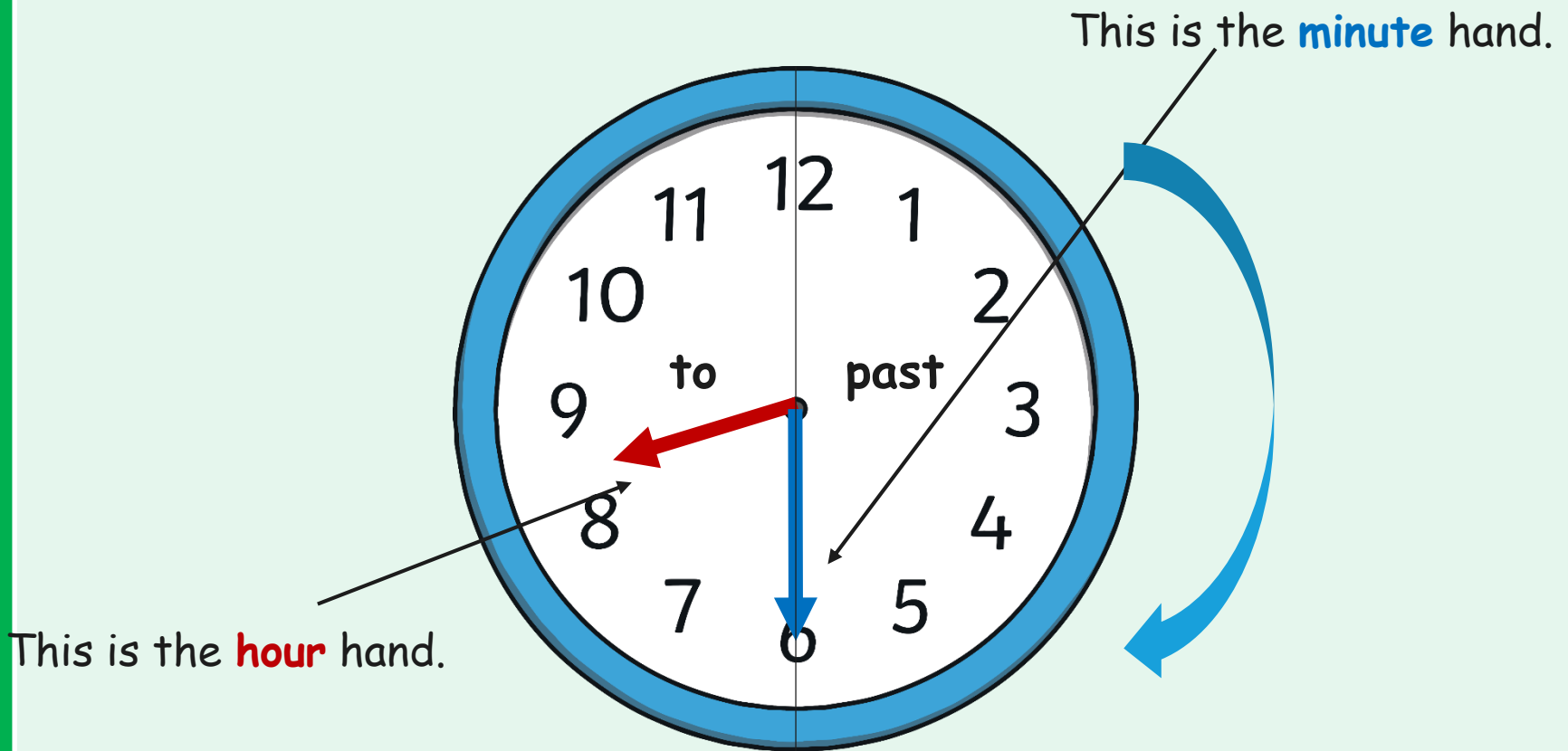
Green activity:

# Key parts of a clock



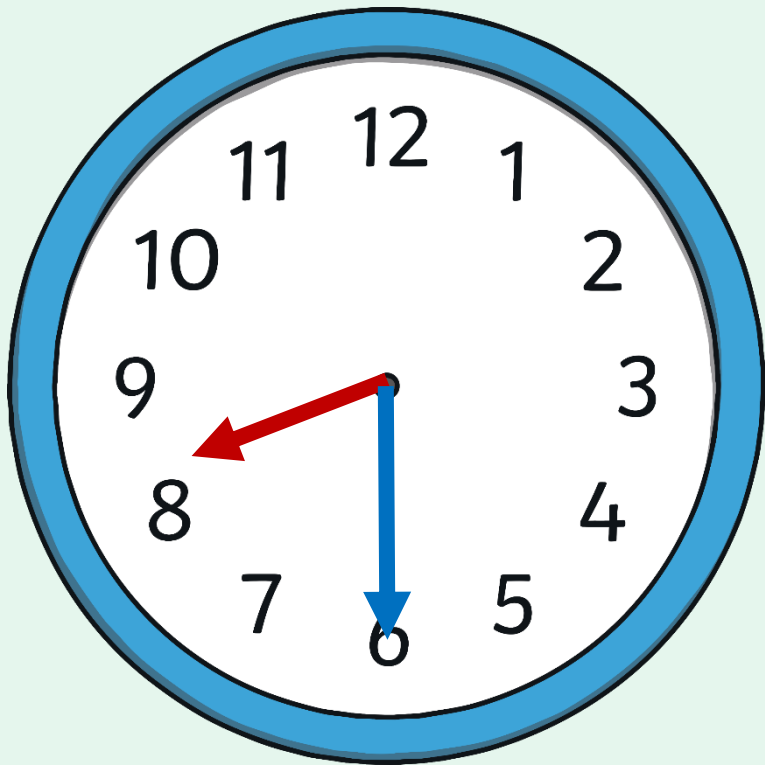
Green activity:

# Key parts of a clock



# Half past times

When the minute hand is pointing to 6, it is showing half of an hour. We call this a 'half past' time.

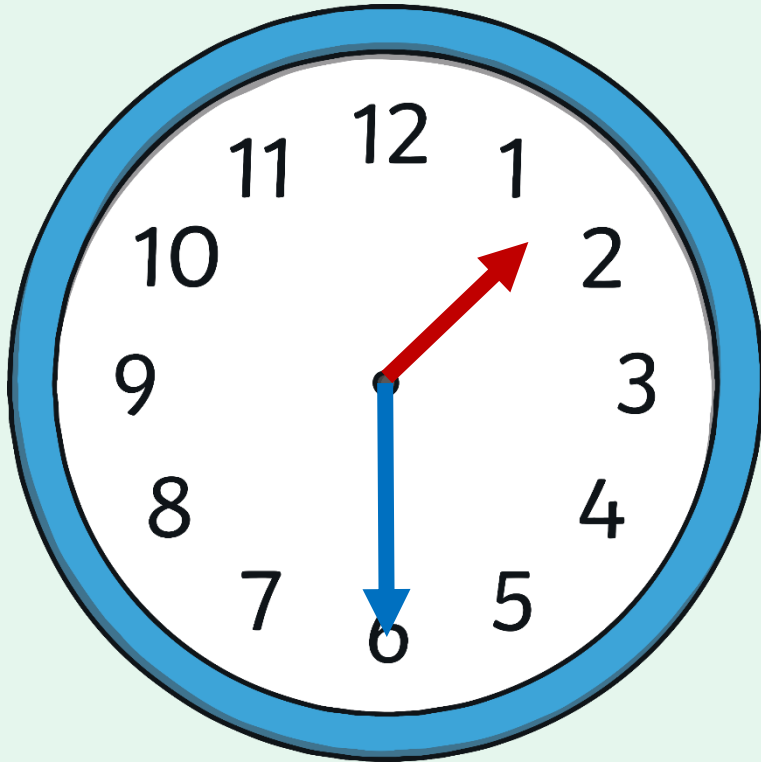


What time is this?

Half past 8



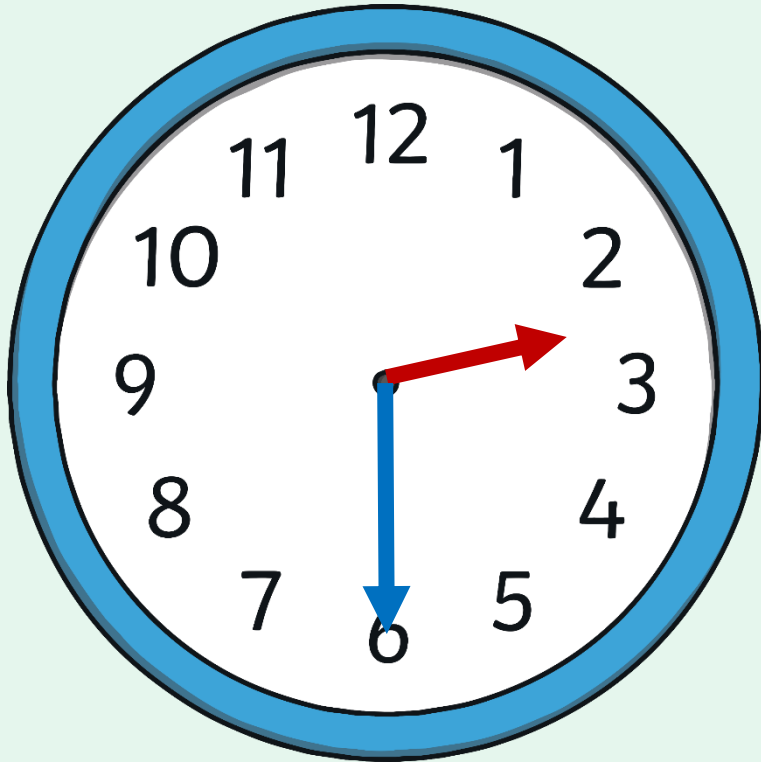
# What time is it?



What time is this?

Half past 1

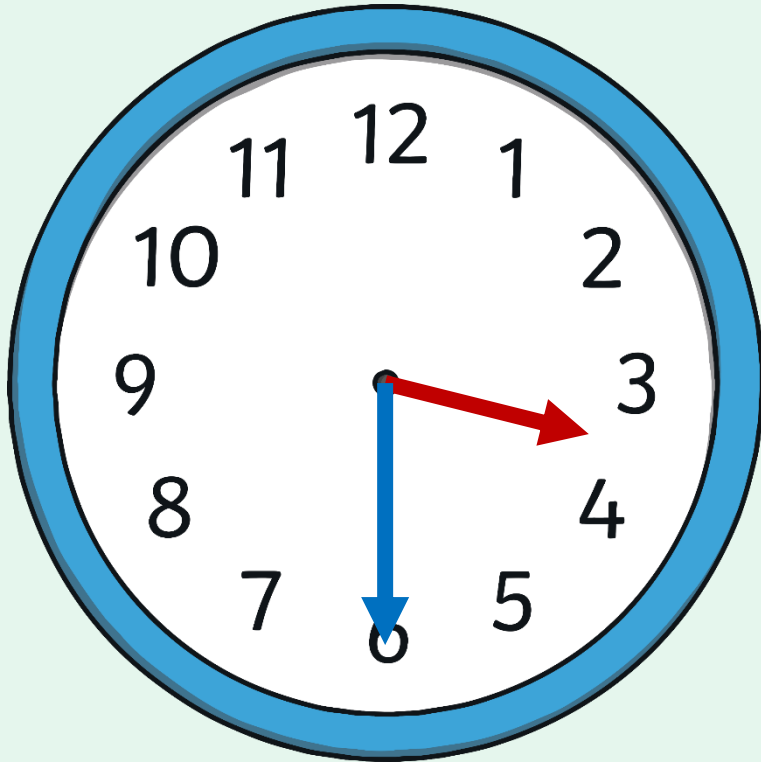
# What time is it?



What time is this?

Half past 2

# What time is it?

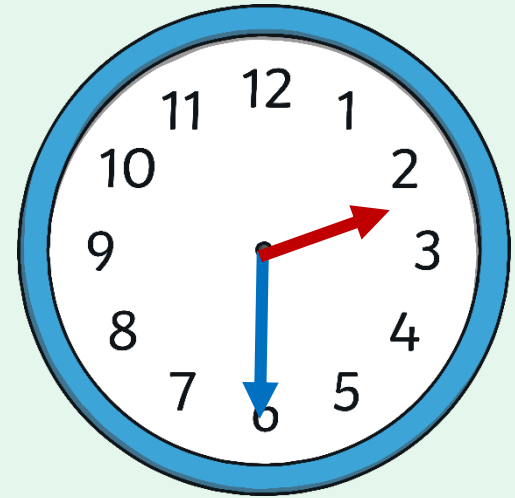
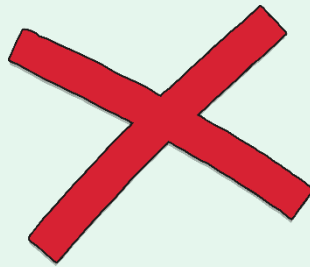
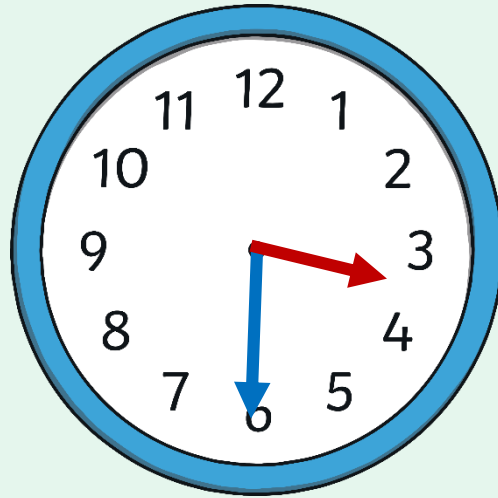
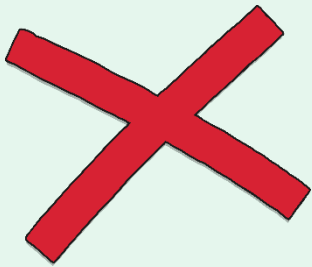
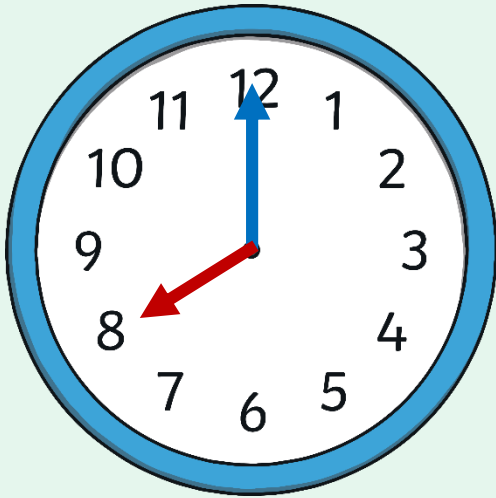


What time is this?

Half past 3

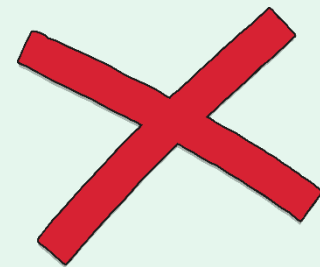
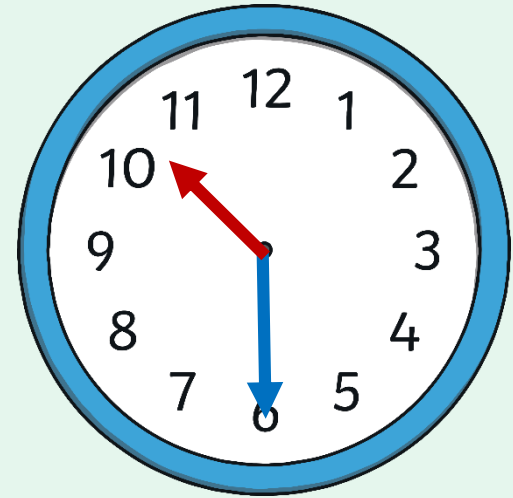
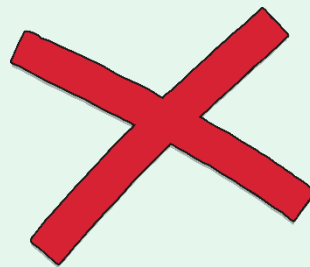
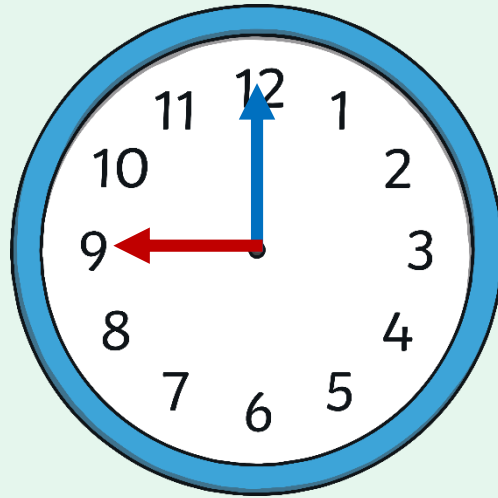
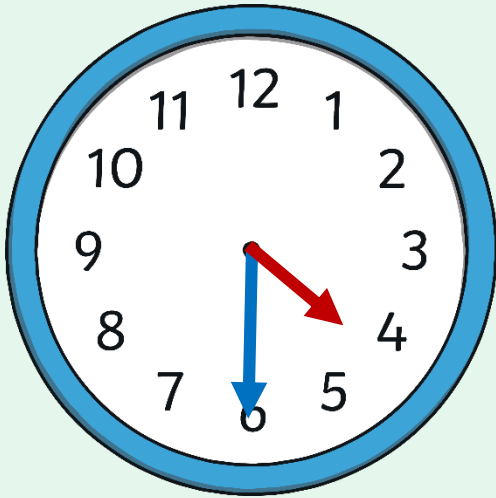
# What Time Is It?

Which clock shows Half past 2?



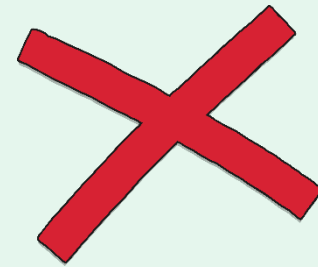
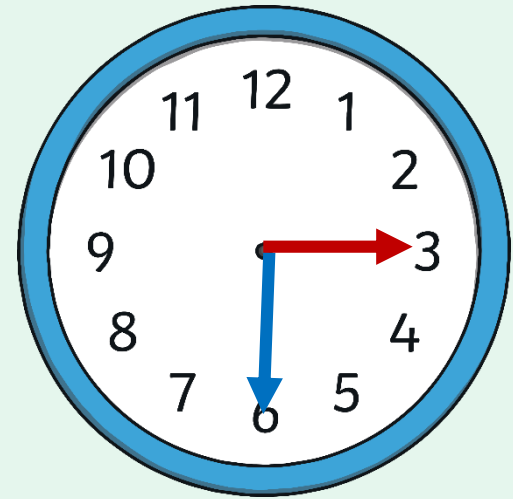
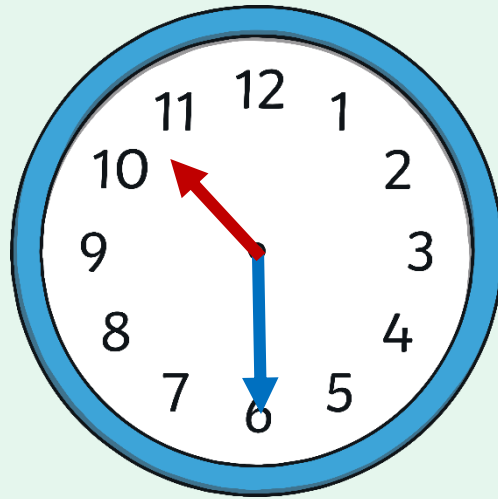
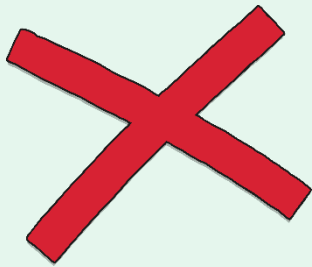
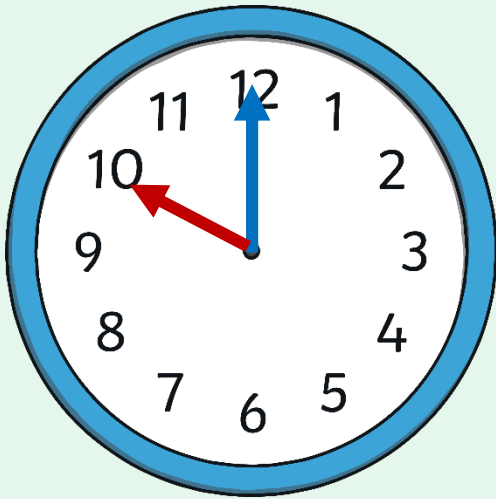
# What Time Is It?

Which clock shows **Half past 4**?



# What Time Is It?

Which clock shows **Half past 10**?

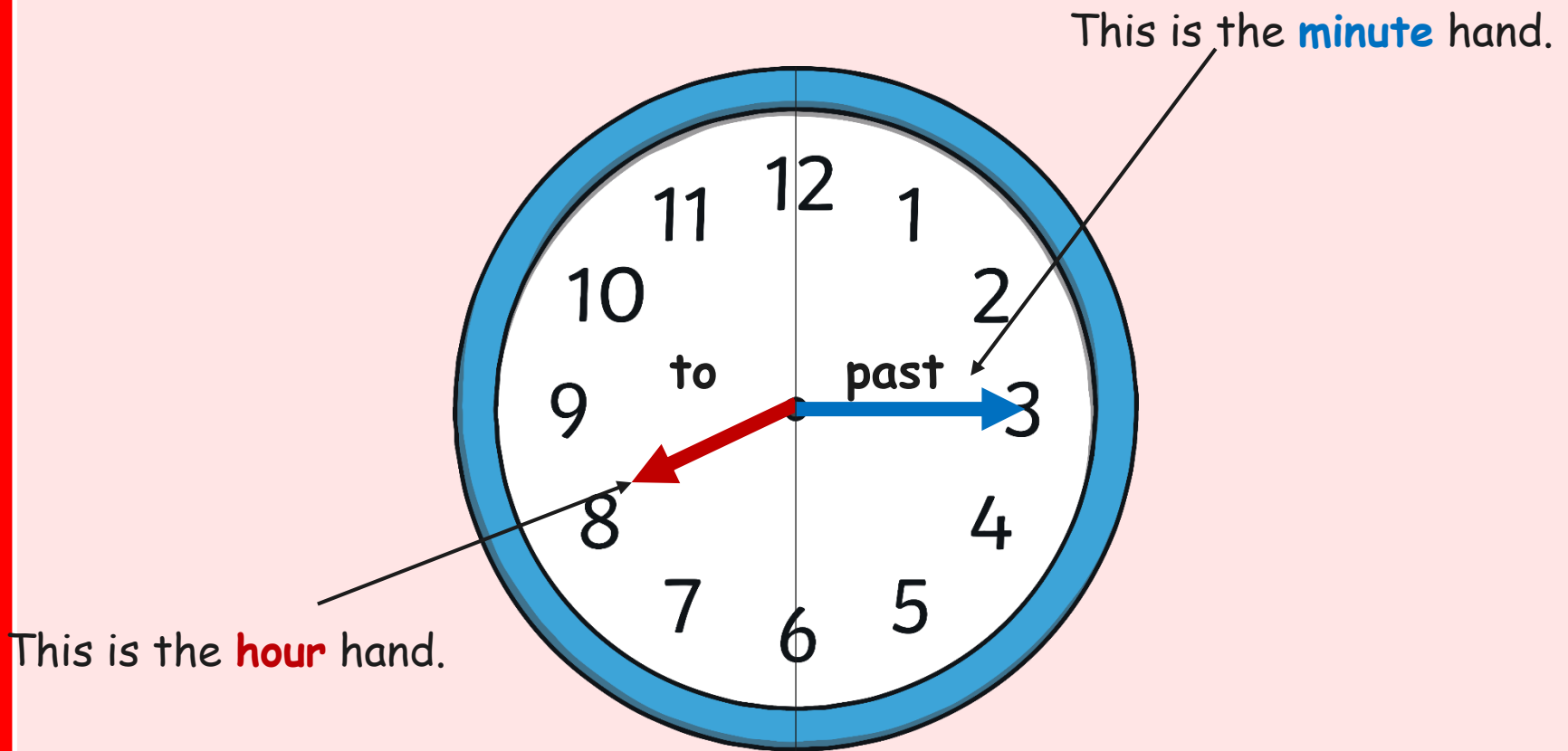


# Follow up activity:

Download the [GREEN ACTIVITY](#) sheet on the school website

Red activity:

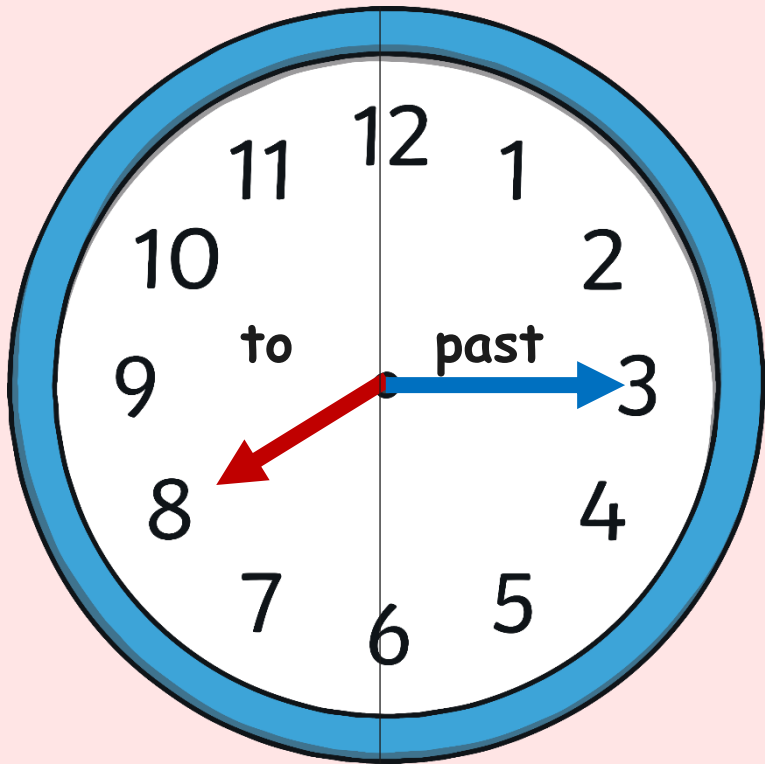
# Key parts of a clock





# Quarter past times

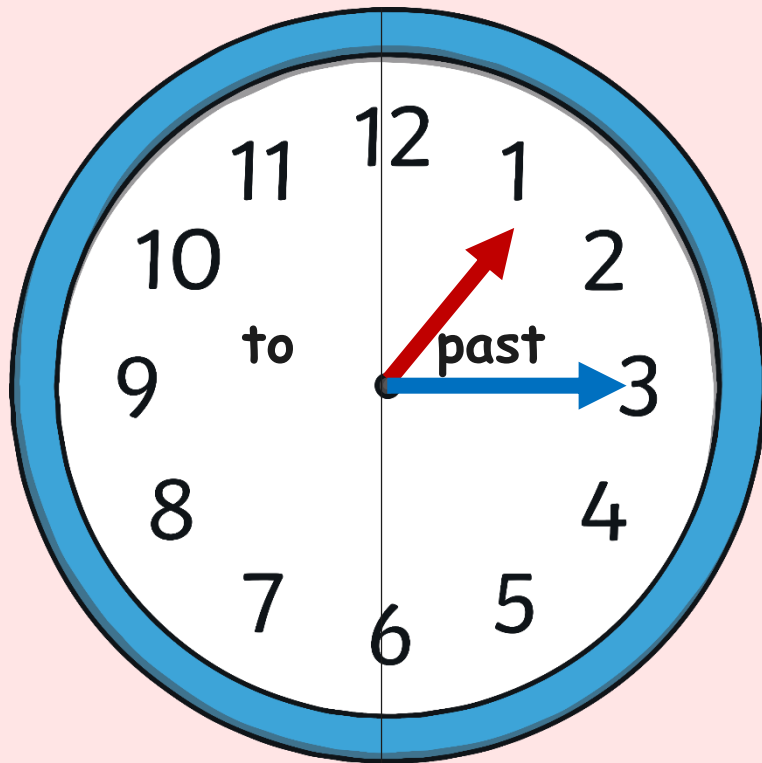
When the minute hand is pointing to 3, it is showing quarter of an hour.  
We call this a 'quarter past' time.



What time is this?

Quarter past 8

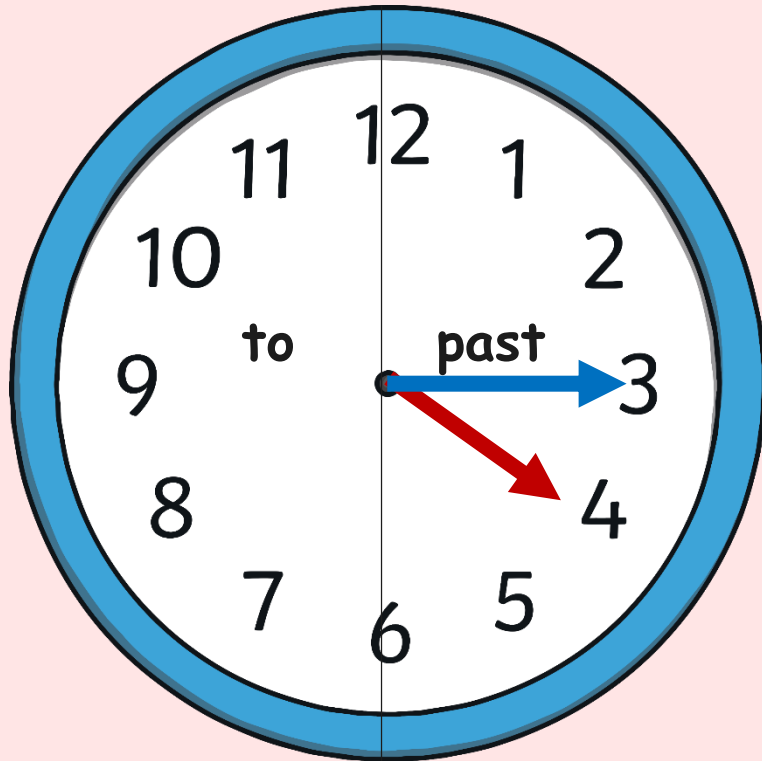
# Quarter past times



What time is this?

Quarter past 1

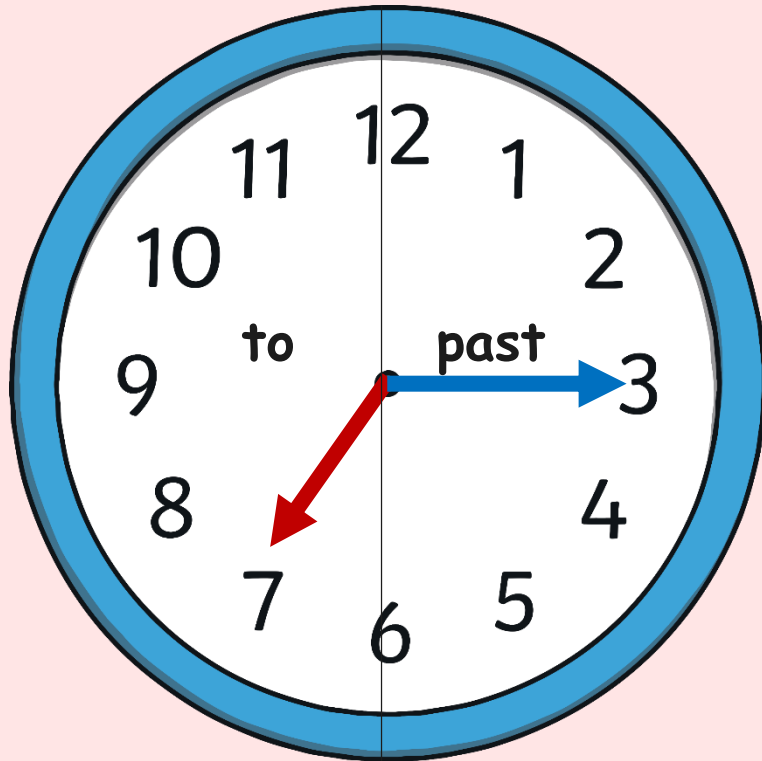
# Quarter past times



What time is this?

Quarter past 4

# Quarter past times



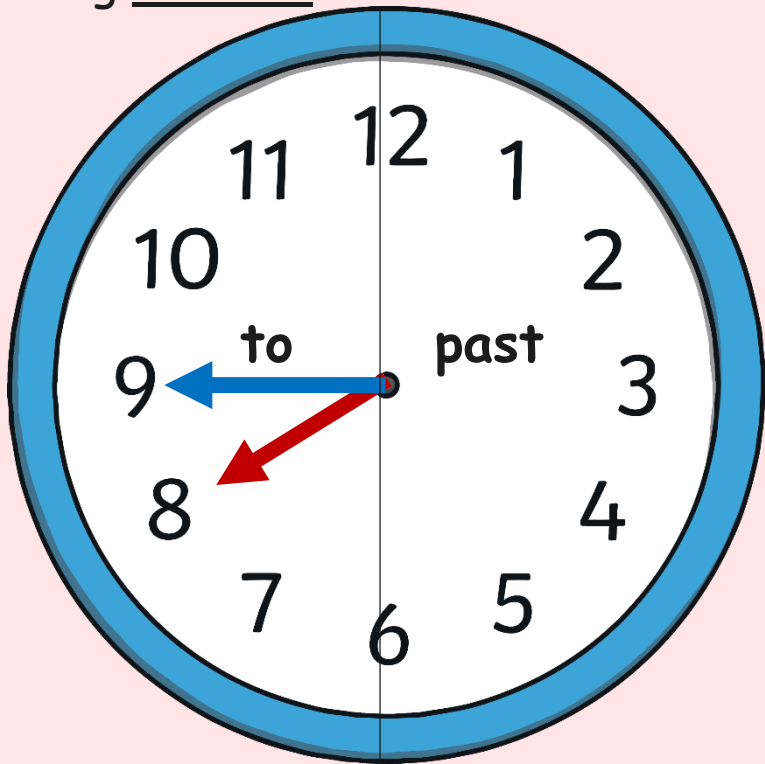
What time is this?

Quarter past 7

# Quarter to times

When the minute hand is pointing to 9, it is showing quarter of an hour.

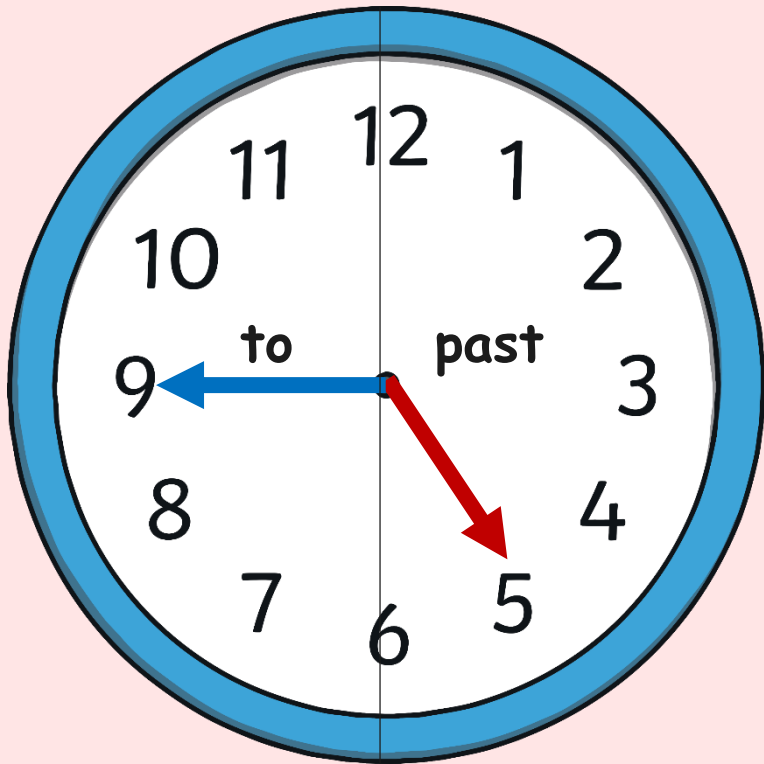
We call this a 'quarter to' time as the minute hand is moving towards the next hour.



What time is this?

Quarter to 8

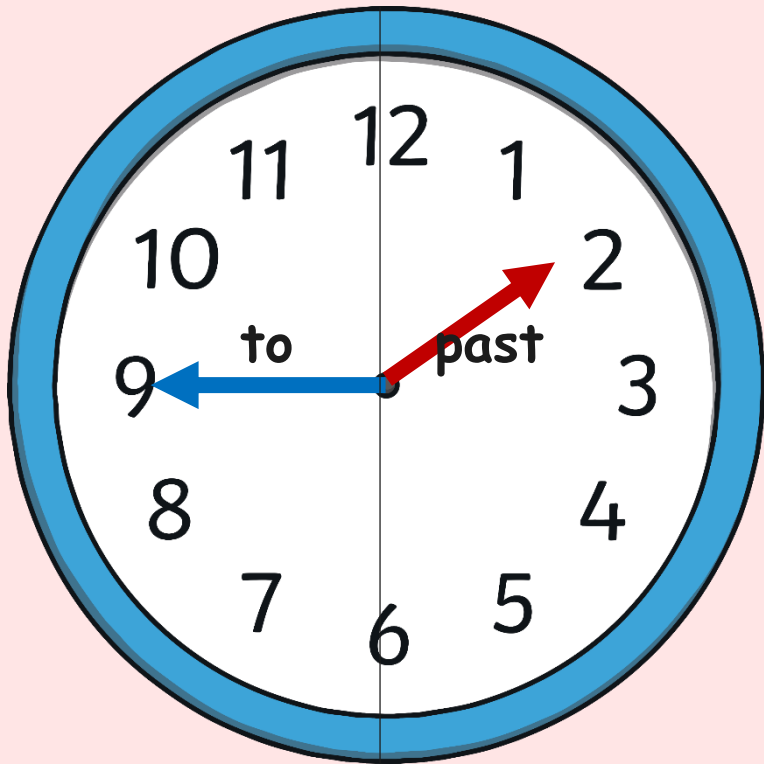
# Quarter to times



What time is this?

Quarter to 5

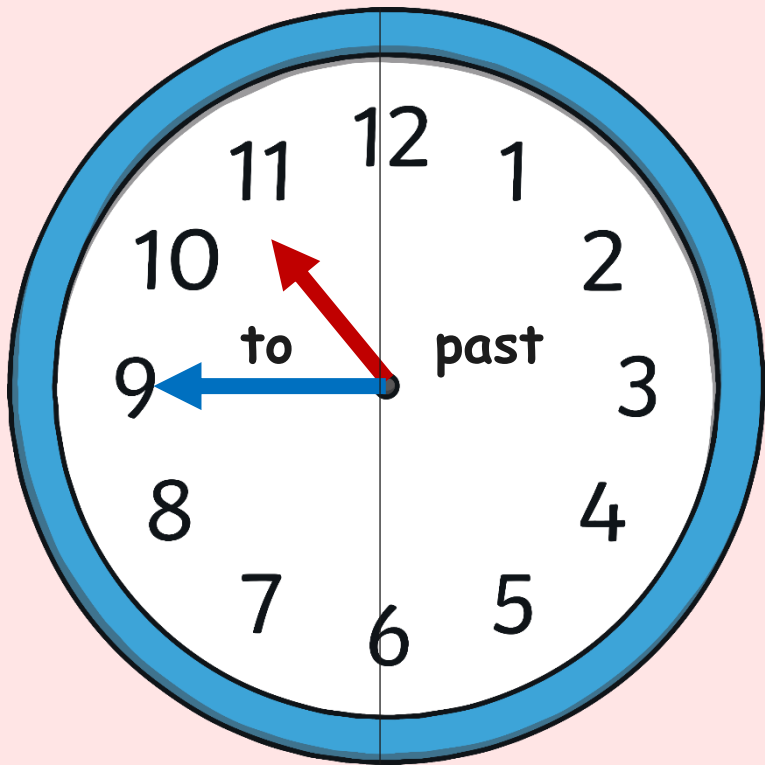
# Quarter to times



What time is this?

Quarter to 2

# Quarter to times



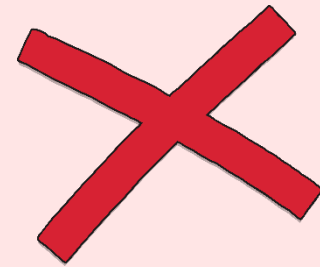
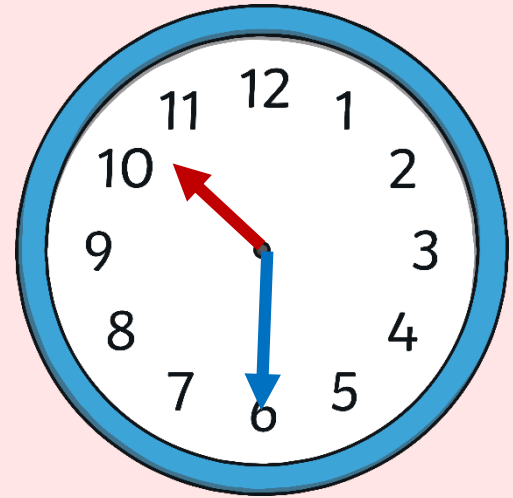
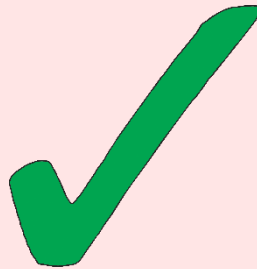
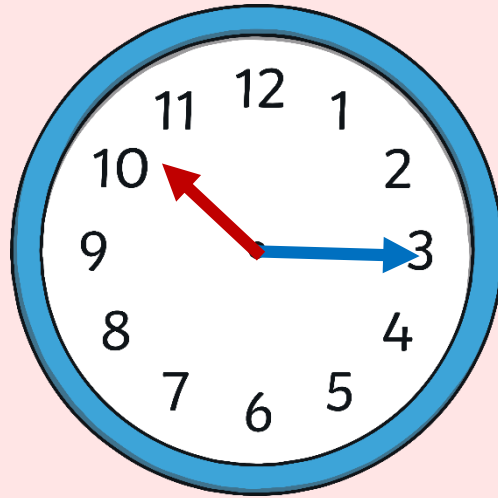
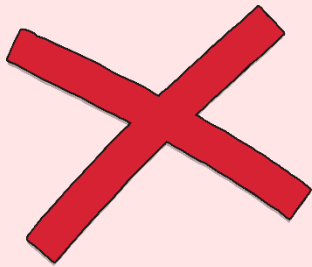
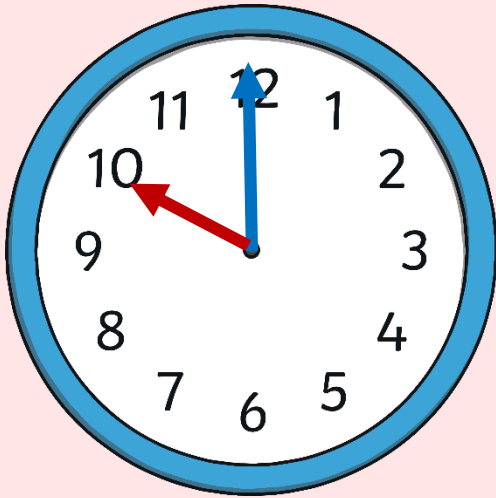
What time is this?

Quarter to **11**



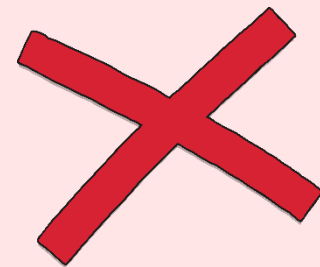
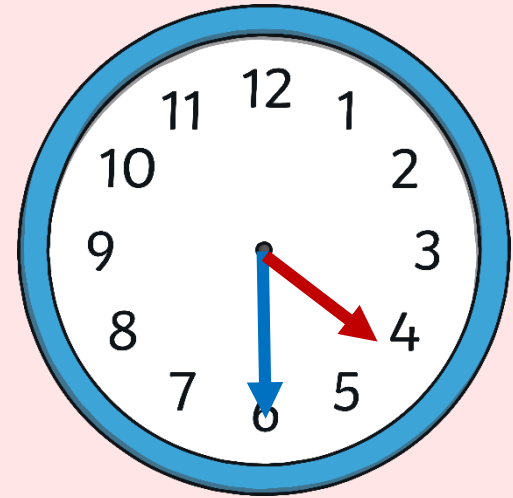
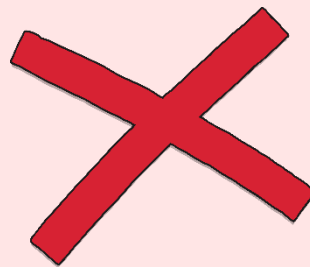
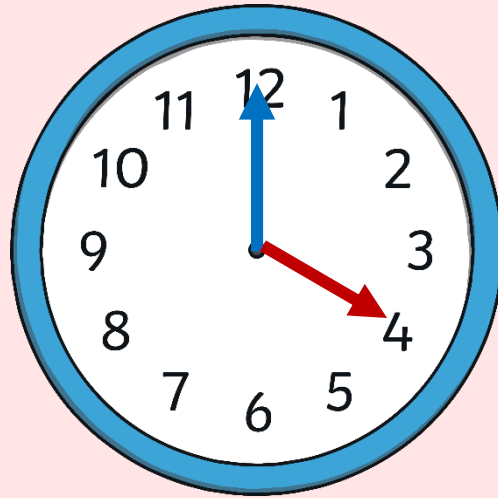
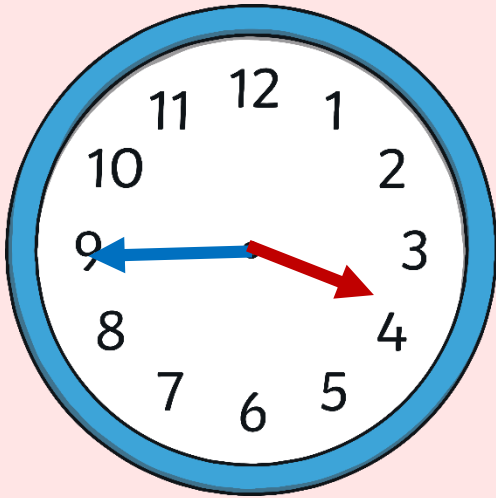
# What Time Is It?

Which clock shows Quarter past 10?



# What Time Is It?

Which clock shows **Quarter to 4**?



# Follow up activity:

Download the RED ACTIVITY sheet on the school website